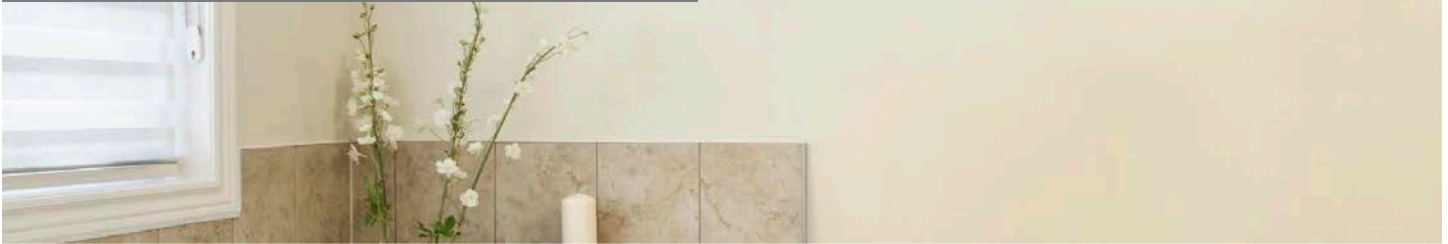


TH401

Simple, non-programmable control



- Eliminate temperature swings with precise digital temperature sensing
- No clicks or operating noise—100% silent operation and on-screen indicator shows when heater is operating
- Controls up to 1,250 watts at 120 volts, 2,500 watts at 240 volts, or 2,160 watts at 208 volts
- Includes temperature lock limits to create minimum and maximum set points
- Ideal performance for electric baseboard and wall heaters
- Comfort range: 1 degree

Product Dimensions:

3-3/10"W x 5"H x 1-1/2"D

Depend on the practical simplicity of the TH401. This non-programmable digital thermostat has simple push-button function, slim design, and silent operation to make comfort control as easy as it looks.

ARCHITECTURAL - ENGINEERING INFORMATION

Electronic thermostat is CSA listed for US and Canada. The thermostat shall have on-screen display of status of heater. Switching means shall be by "triac switching action" to eliminate RF line noise. The control shall be capable of switching maximum loads of 10.4 amps at 240 volts. Minimum load requirement .83 amp. Vented housing shall be white and made of flame retardant high impact plastic with two mounting screws and two solderless connectors provided. Set for 15-second heating cycles for baseboard heaters, or 5-minute heating cycles for fan heaters. No batteries shall be required for operation.

TECHNICAL INFORMATION

Set point range: 41°F to 86°F (5°C to 30°C)

Temperature set point does not need to be reset after a power outage.

10.4 amps maximum load

UPC/PART	MODEL	DESCRIPTION	VOLTS	AMPS
027418 72838 8	TH401	Electronic non-programmable, single pole, white	120/240/208	10.4

CADET 
INVITING WARMTH

cadetheat.com
855.CADET.US
Vancouver, Washington

