

# Line Voltage Thermostat

## Features

- For use with linear and panel convection and electric baseboard heaters
- Designed for superior ventilation across bimetal for optimum accuracy

## Ordering Guide

Cat. No.	Rating		Switch	Color
	Non-Inductive	Inductive		
TS521W	5000W/277V Max.	1/3HP/240V	SPST	White
TD522W	5000W/277V Max.	1/3HP/240V	DPST	White

# Low Voltage Thermostat

## Features

- Traditional styling
- Adjustable anticipator setting
- Temperature range: 10-30°C / 50-86°F
- For use with 24V control systems

## Ordering Guide

Cat. No.	Rating	Switch	Color
T822K1018	30V AC Max, 1.5A, Fahrenheit	Bi-metal	White
T822K1034	30V AC Max, 1.5A, Celsius	Bi-metal	White
CCTHV-100	30V AC, 0.5A	TRIAC	White
CCTHV-100-3	30V AC, 0.5A, LCD Display, celsius and fahrenheit	TRIAC	White

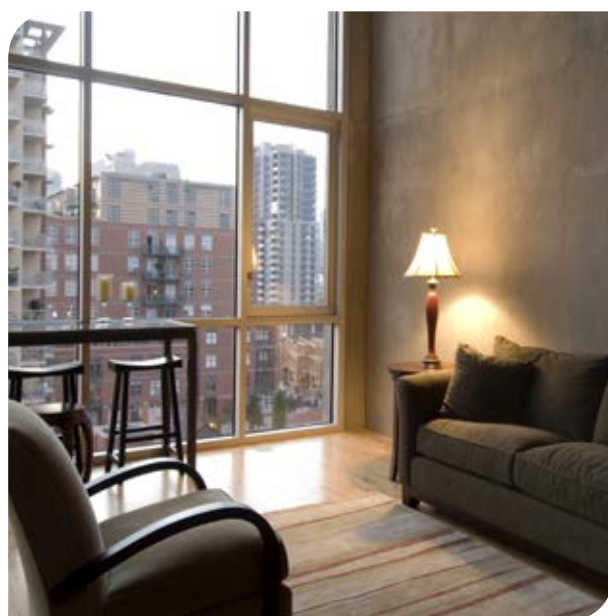
## Accessories (field installed)

Cat. No.	Description
F290143	Universal plastic thermostat guard with locking key. Fits all units on this page. 162mm (L) x 89mm (W) x 82.8mm (D)

## Line Voltage



TS / TD



## Low Voltage



**T822K 1034\* /  
T822K 1018\*\***

\*Celsius scale for Canada  
\*\*Fahrenheit scale  
for United States



**CCTHV**  
No Display